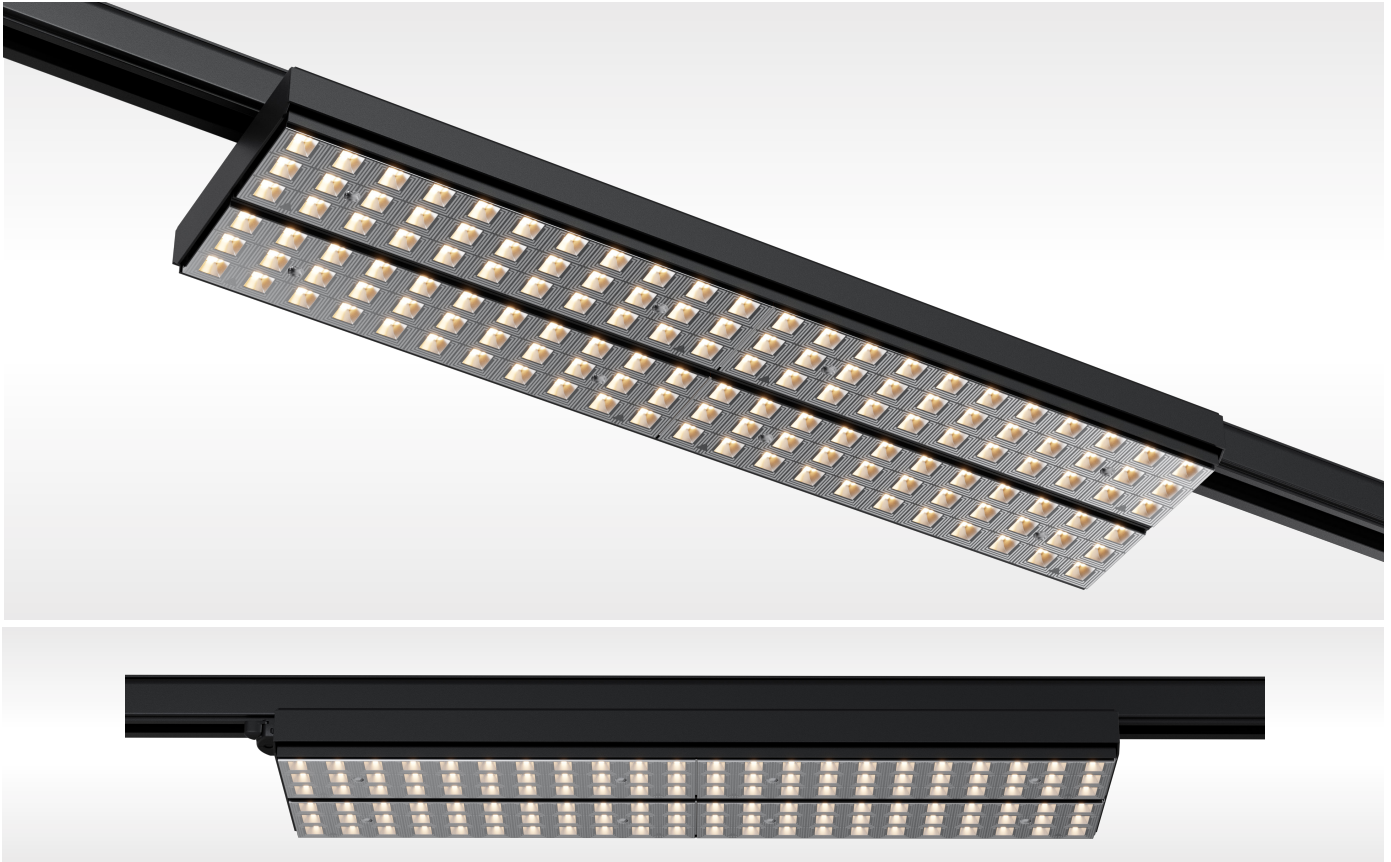


Plano 3.0 Space

LINE



DESCRIPTION

The Plano Space track light differs from the previous Plano model by using reflector optics, which allows for focused light and enhanced comfort for customers.

Plano Space has the ability to combine several types of optics in one housing, offering solutions for various tasks.

Thanks to the lamp's power, we can reduce the number of fixtures in the project.



Increased customer comfort.

Thanks to the reflective optics, the UGR can reach 17, providing enhanced comfort for the customer.



Power. Allows for fewer fixtures to be used in the project.



Optics combination capability.

You can combine multiple optical elements in one fixture to address various lighting tasks on parallel shelves.

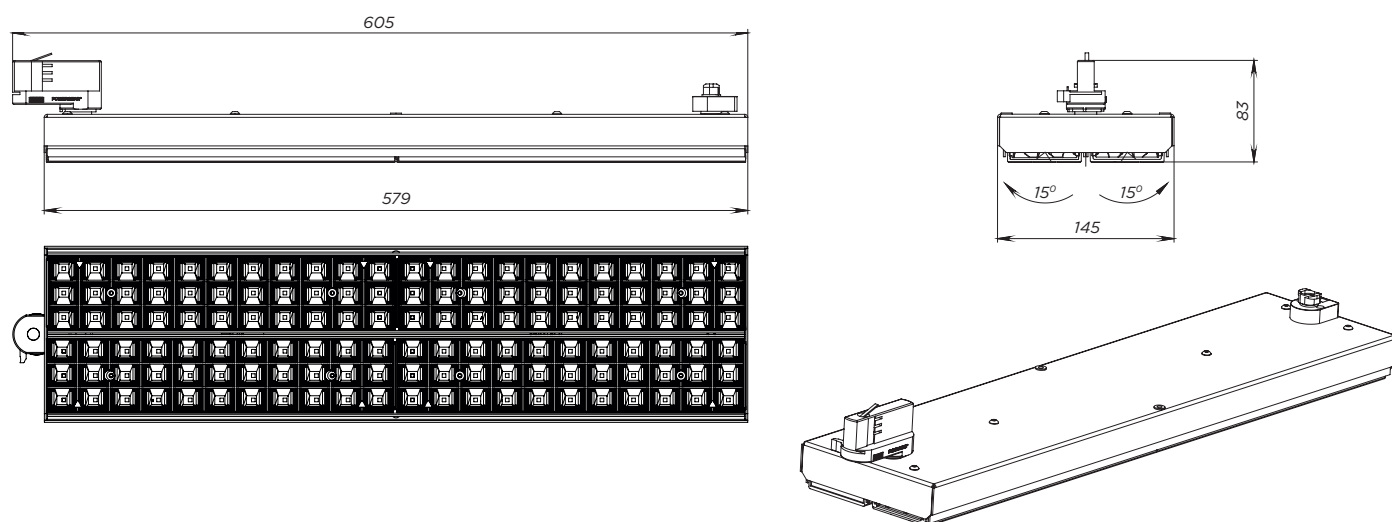


website

General specifications

Type of luminaire	Line (linear light)
Application areas	general and accent lighting
Блок живлення	LED Driver integrated
Nominal voltage	230V, 50Hz
Lighting technology	LED SMD 2835
Optic	PC
Power factor	0,95
Cooling	passive
Body	steel
Weight	2,5 kg
Package	Single
Life time	50,000 hours.
Warranty	5 years/50,000 hours
Certification	CE, UKCA, UA

Dimensions



Scope of application



Plano 3.0 Space

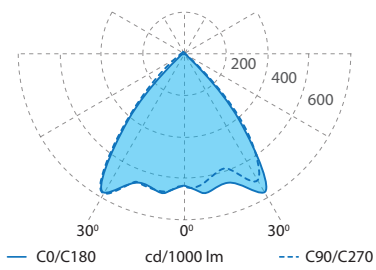
LINE

Nomenclature

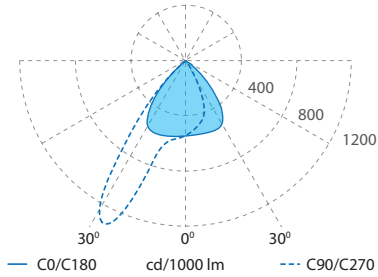
Luminaire LINE Plano 3.0 Space										SO	3R	LF	90°	80W	840	3PH	IP21	BL
Order Type	Type of luminaire board	Luminaire Filter Type	Luminaire Beam Angle	Luminaire Power, W	Luminaire Color Rendering Index (CRI)	Luminaire Color Temperature, K	Luminaire Mounting Type	Luminaire IP Rating	Luminaire Housing Color									
SO	3R	LF	90° AS30Nx90 DS30Nx90 DS29Nx90	25 30 35 40 45 50 55 60 65 70 75 80	8	3000 3500 4000	3PH	IP21	BL black RAL 9005 WH white RAL9016									

The deviation of actual power consumption from the specified values does not exceed $\pm 5\%$;
 The luminous flux calculation is based on LEDs with a color temperature of 4000K, CRI80. The deviation of luminous flux from the specified values does not exceed $\pm 10\%$

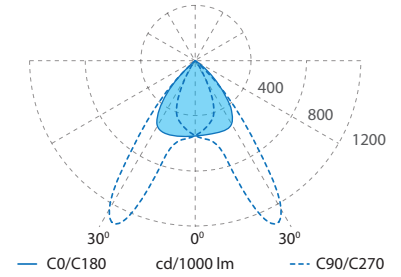
Beam angle



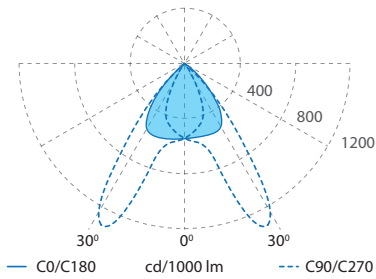
90°



AS30NX90



DS30NX90



DS29NX90

Technical details, as well as size and weight parameters were prepared as accurately as possible. All dimensions in mm. LED Lifetime Information - L90 / B10 at 25 °C ambient temperature. A tolerance of +/- 10% applies to luminous flux and performance characteristics. Minimum color rendering indices Ra > 80 / > 90. Product images are used as an example and may differ from the original. We reserve the right to make changes in order to improve the product.